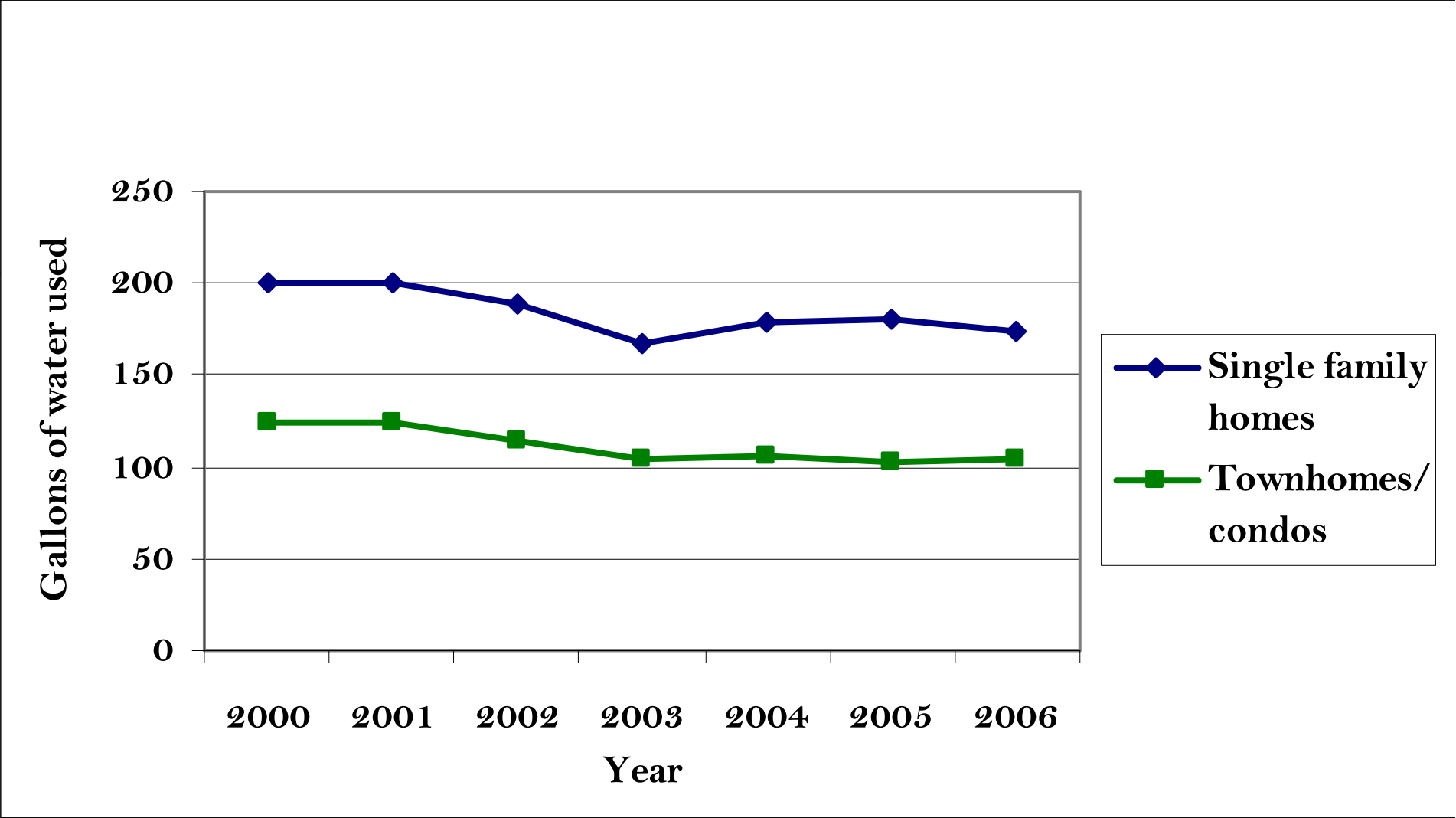


# Water Quality

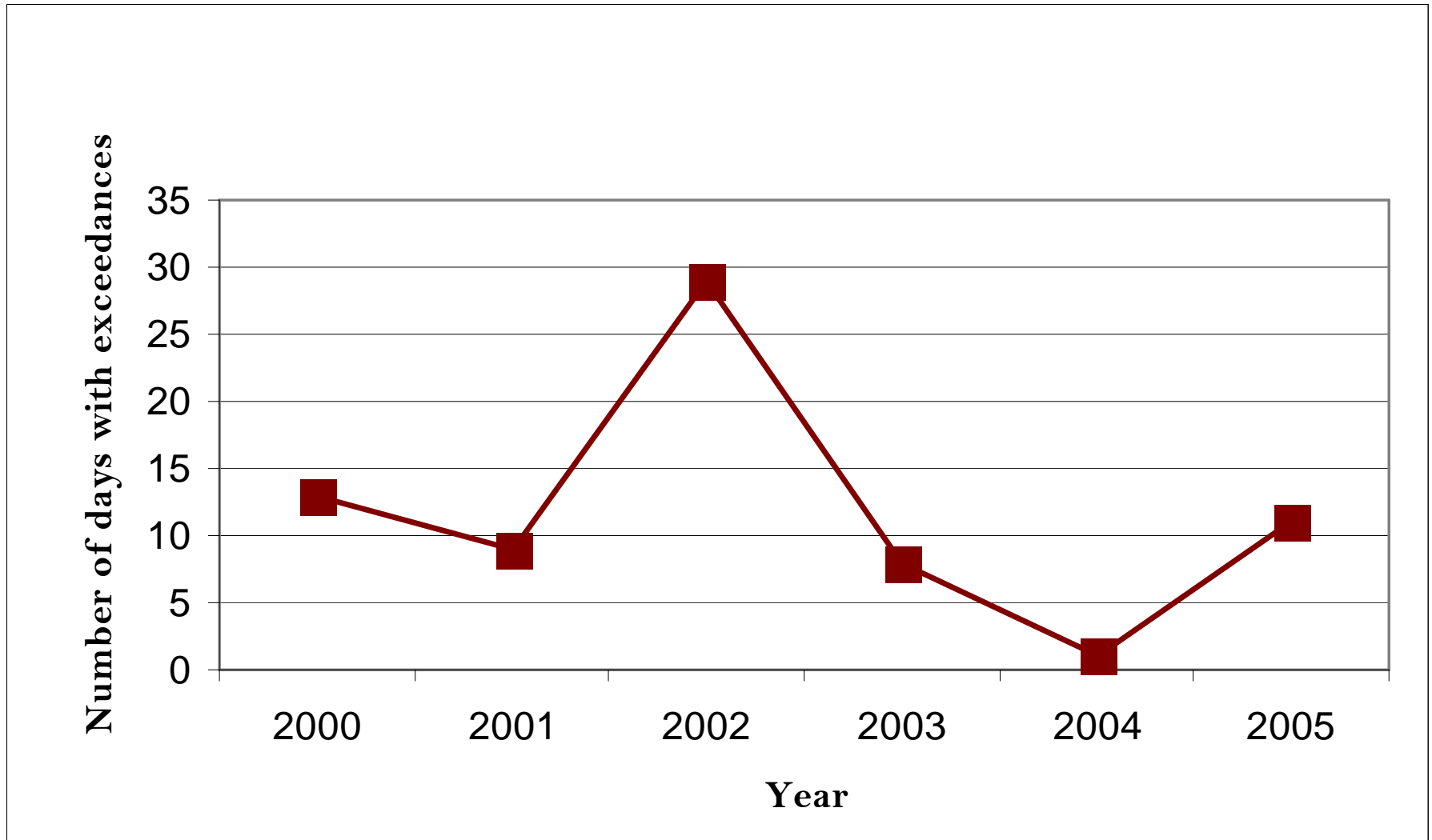
Percentage of Water Quality Samples  
that Exceed State Standards: Fecal Coliform

	Fecal Coliform		
Units	#/ 100ml		
NC Standard	200		
Year	# of Exceedances	Samples Taken	% Exceed
2000	71	96	74%
2001	43	107	40%
2002	51	141	36%
2003	49	148	33%
2004	49	127	39%
2005	52	142	37%

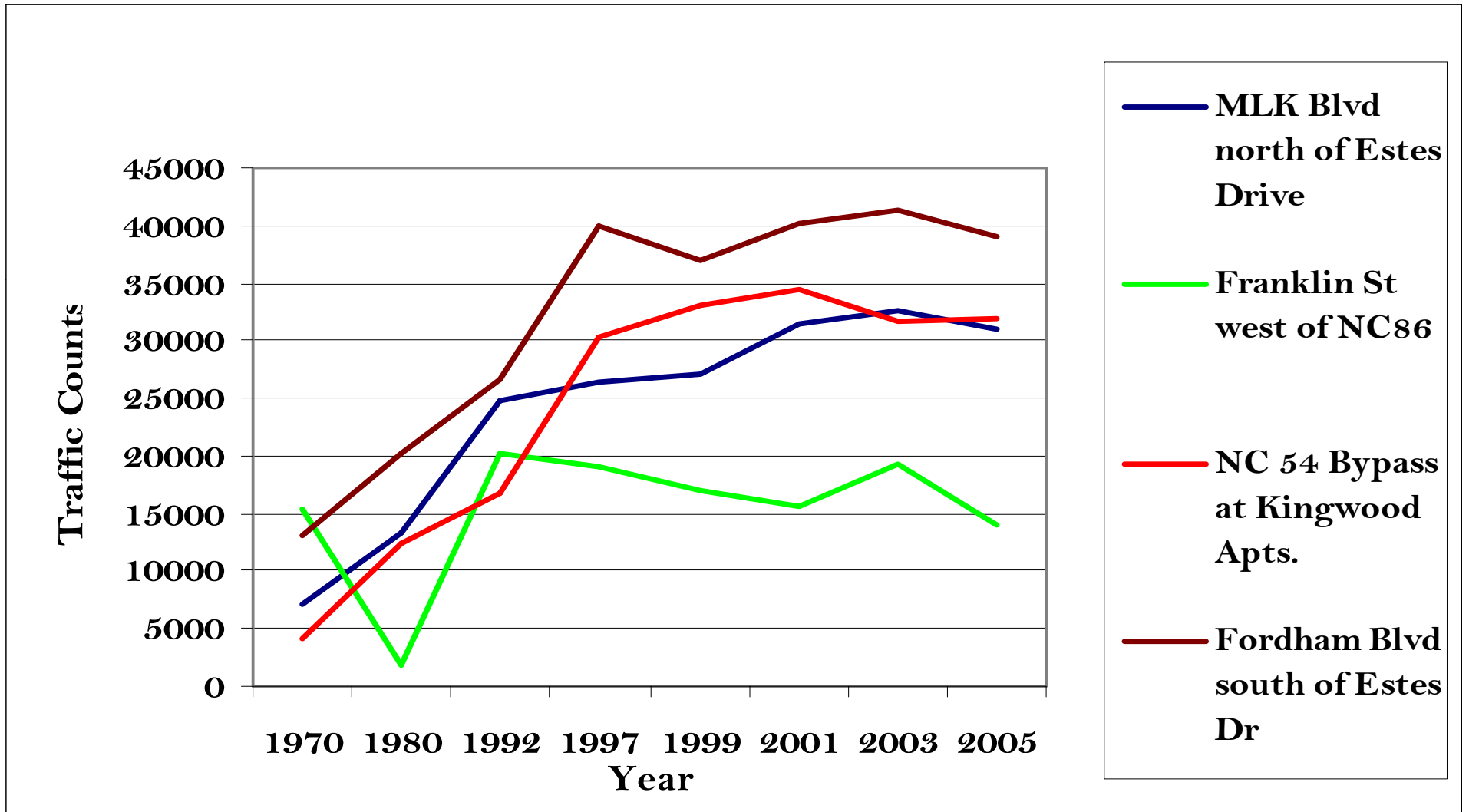
# Gallons of Water Used Per Day Per Household



# Ozone Exceedance Days in the Triangle



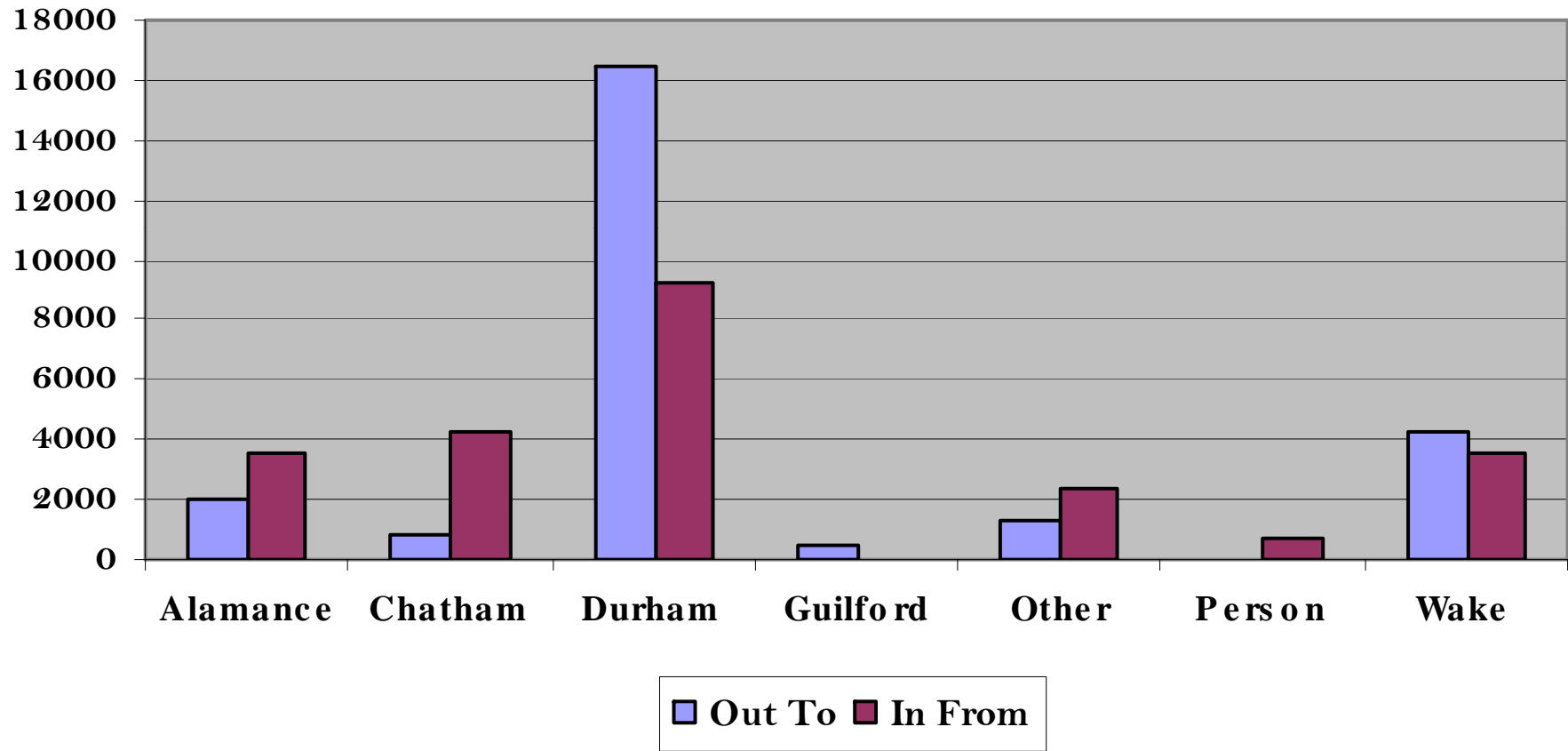
# Traffic Counts Along Key Chapel Hill Roads



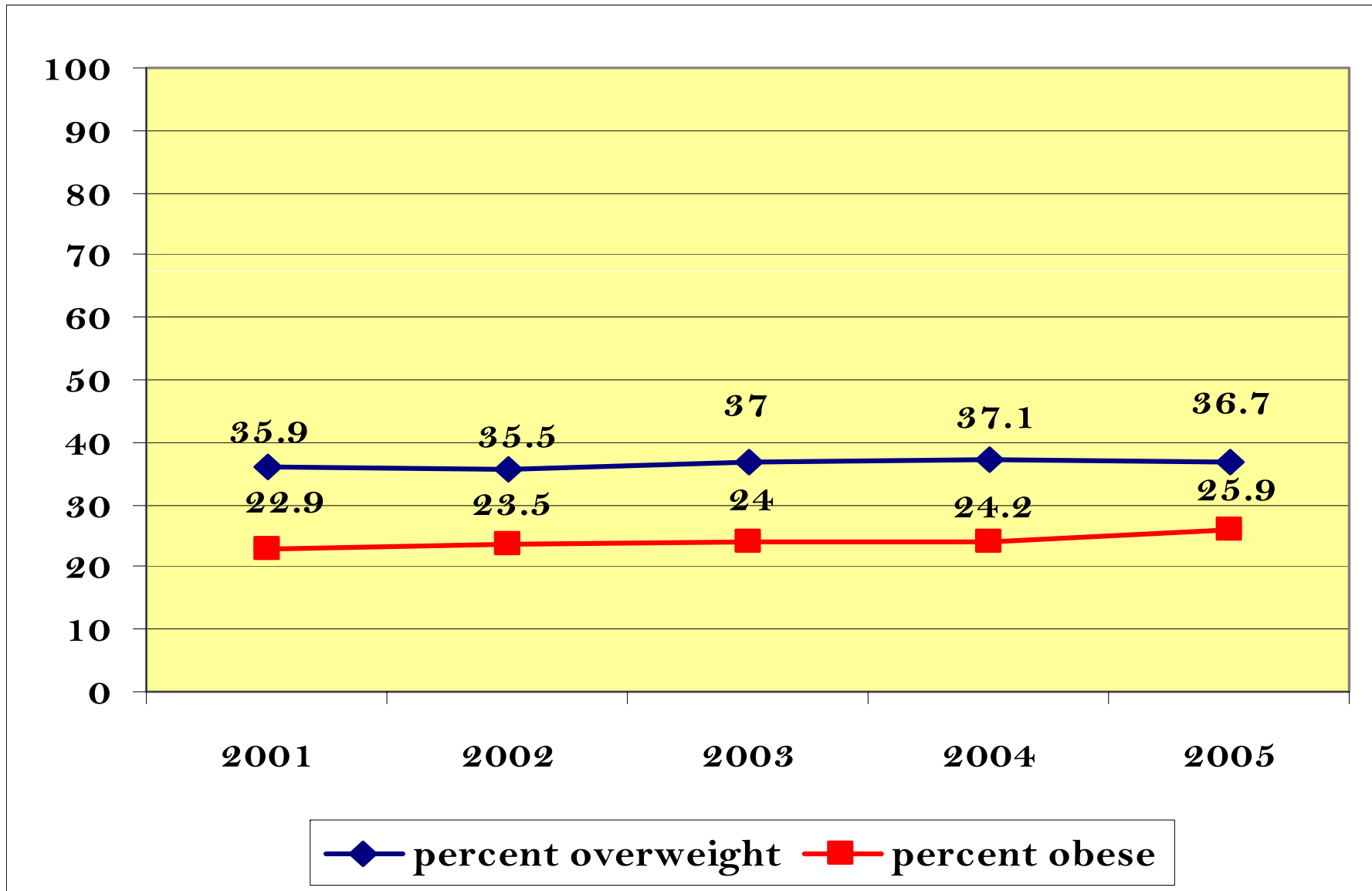
# Modes of Transportation

	<b>Drive Alone</b>		<b>Carpool</b>		<b>Walk</b>		<b>Bike</b>		<b>Bus</b>		<b>Other</b>	
<b>Location</b>	1990	2000	1990	2000	1990	2000	1990	2000	1990	2000	1990	2000
Chapel Hill	66%	61%	10%	9%	11%	15%	2%	2.4%	5%	6%	5%	6%
Triangle Region	77%	78%	14%	13%	3%	2%	0%	0.4%	2%	1%	4%	4%
North Carolina	77%	79%	16%	14%	3%	2%	0%	0.2%	1%	1%	3%	4%
United States	73%	76%	13%	12%	4%	3%	0%	0.4%	3%	2%	4%	6%

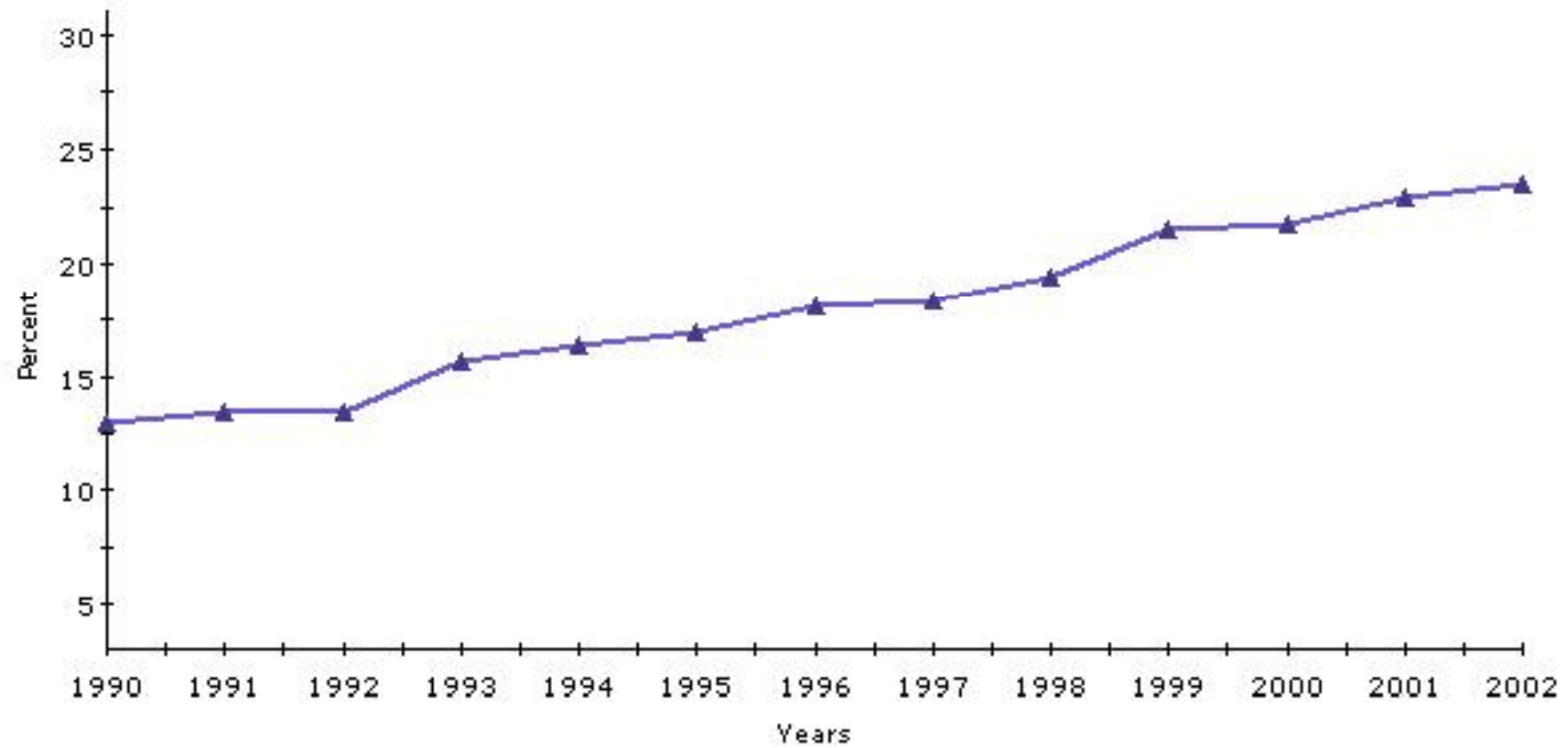
# Chapel Hill Resident's Commuting Patters



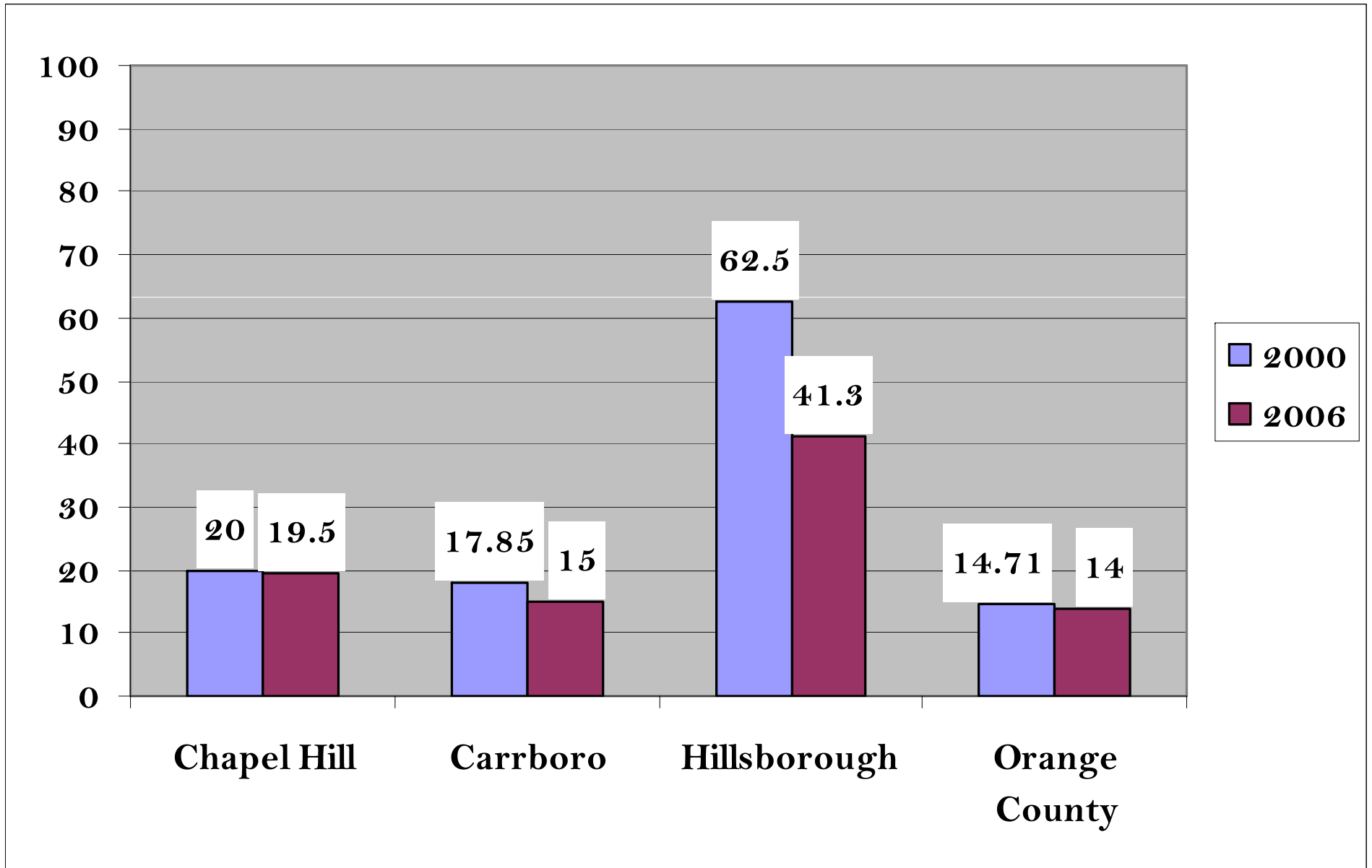
# Percent of Orange County Residents Overweight and Obese



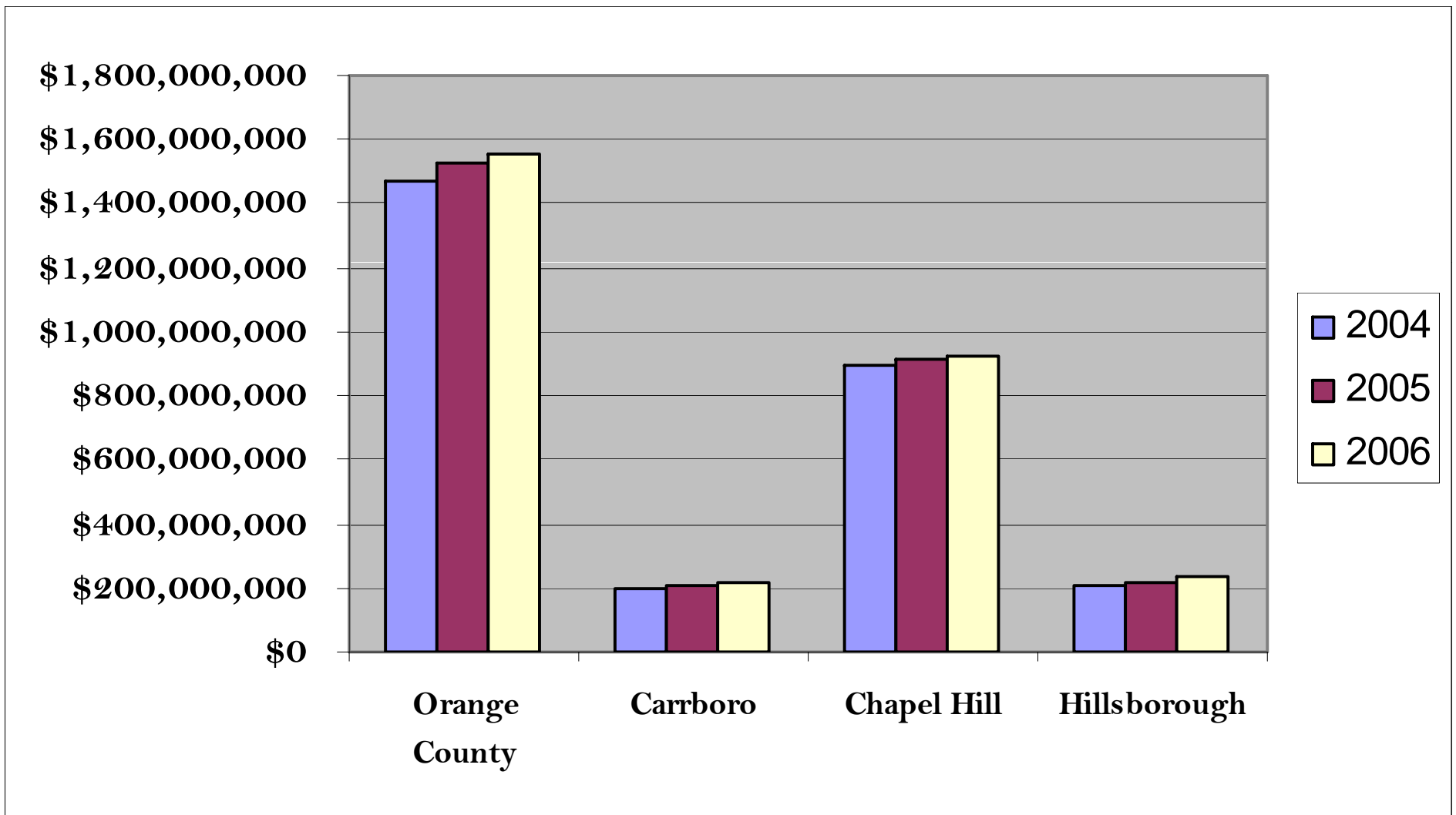
### Obesity: By Body Mass Index North Carolina



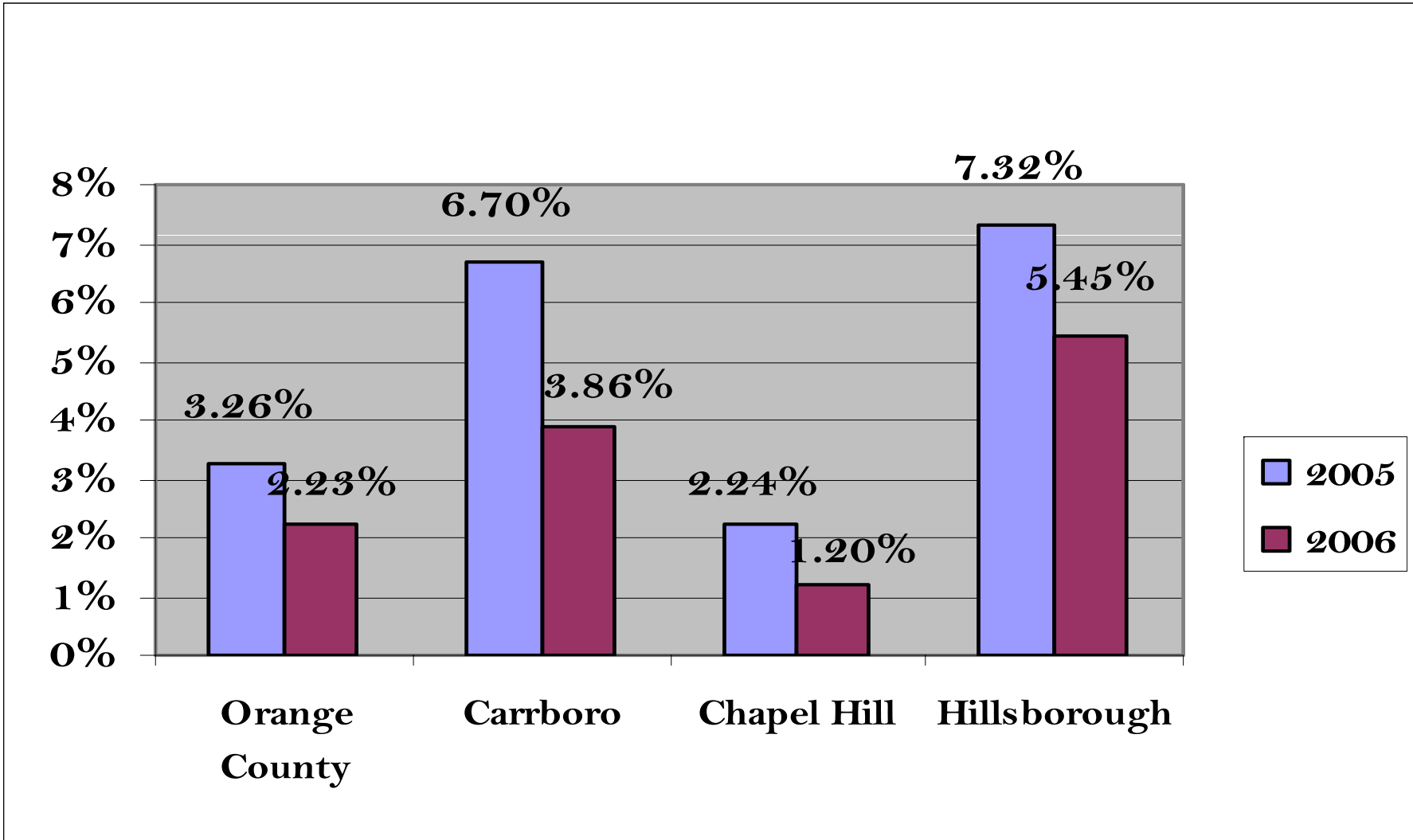
# Percent of Non-Residential Tax Base

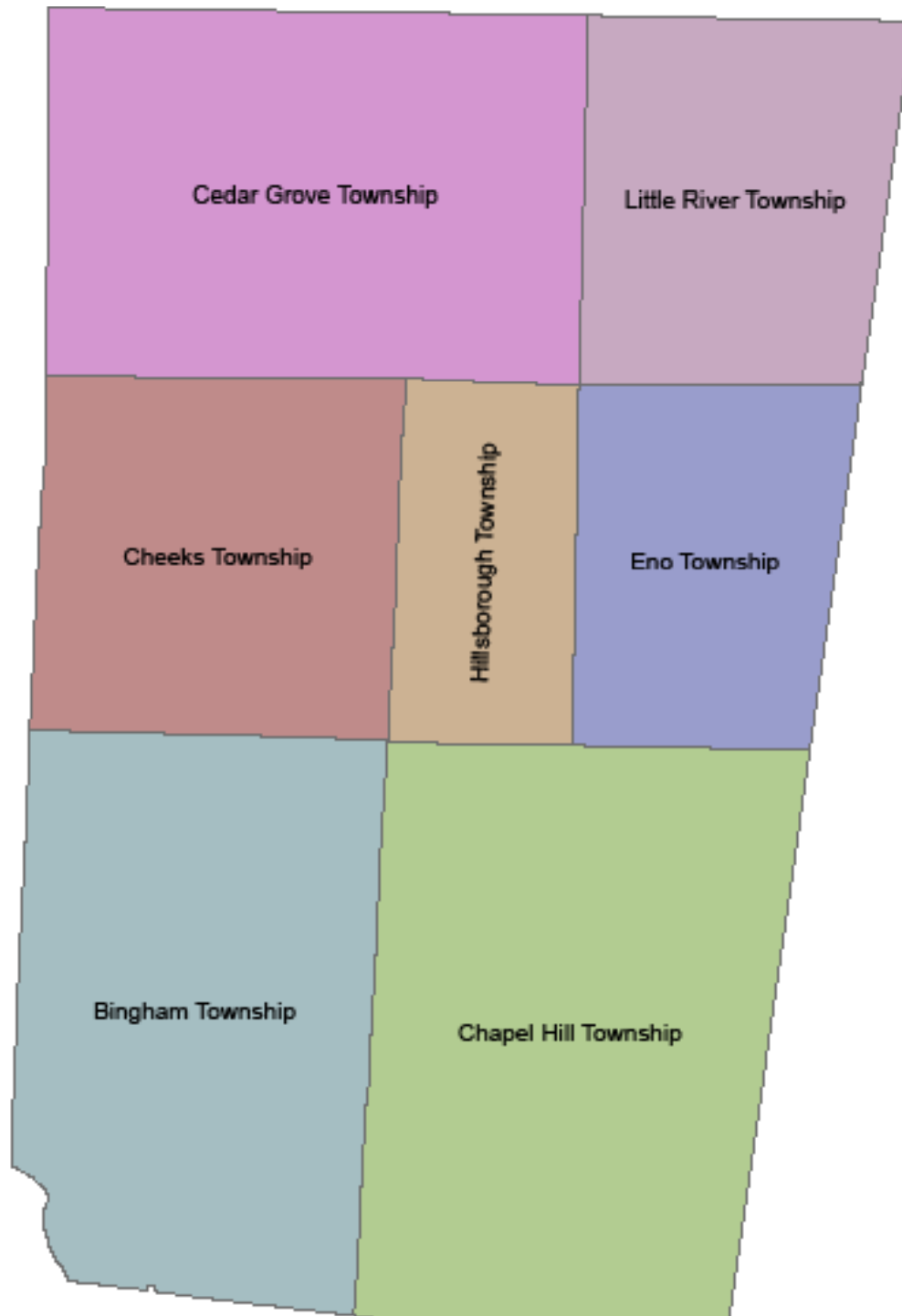


# Non-Residential Tax Base

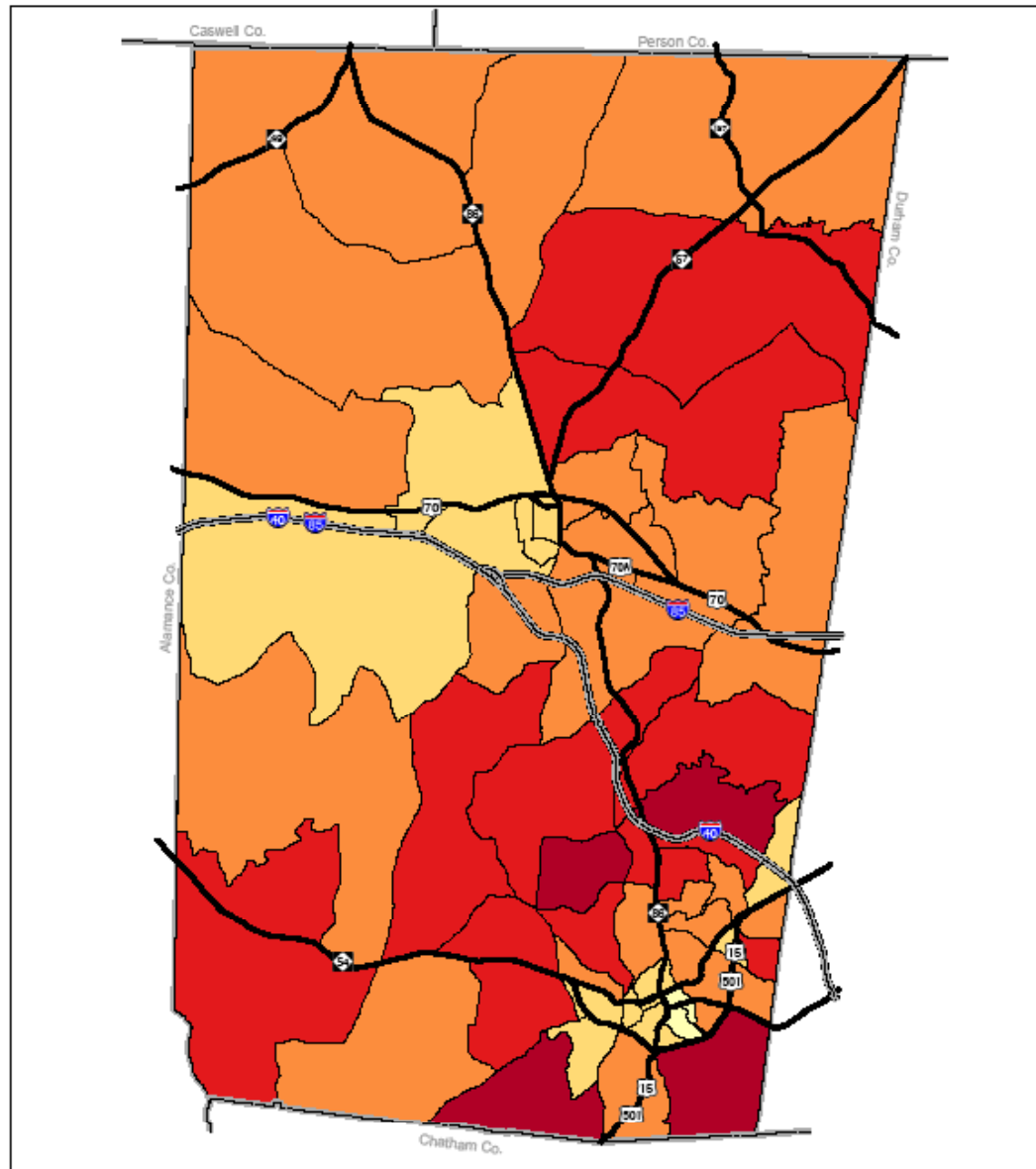


# Percent Non-Residential Tax Base Increase Over Previous Year





# Orange County Median Household Income (Census 2000)



Median Household Income (1999)	
<span style="display:inline-block; width:15px; height:10px; background-color:lightyellow; border:1px solid black;"></span> 4,520 - 16,699	<span style="display:inline-block; width:15px; height:10px; background-color:orange; border:1px solid black;"></span> 38,510 - 56,666
<span style="display:inline-block; width:15px; height:10px; background-color:yellow; border:1px solid black;"></span> 16,700 - 38,518	<span style="display:inline-block; width:15px; height:10px; background-color:red; border:1px solid black;"></span> 56,667 - 80,930
	<span style="display:inline-block; width:15px; height:10px; background-color:darkred; border:1px solid black;"></span> 80,931 - 127,193

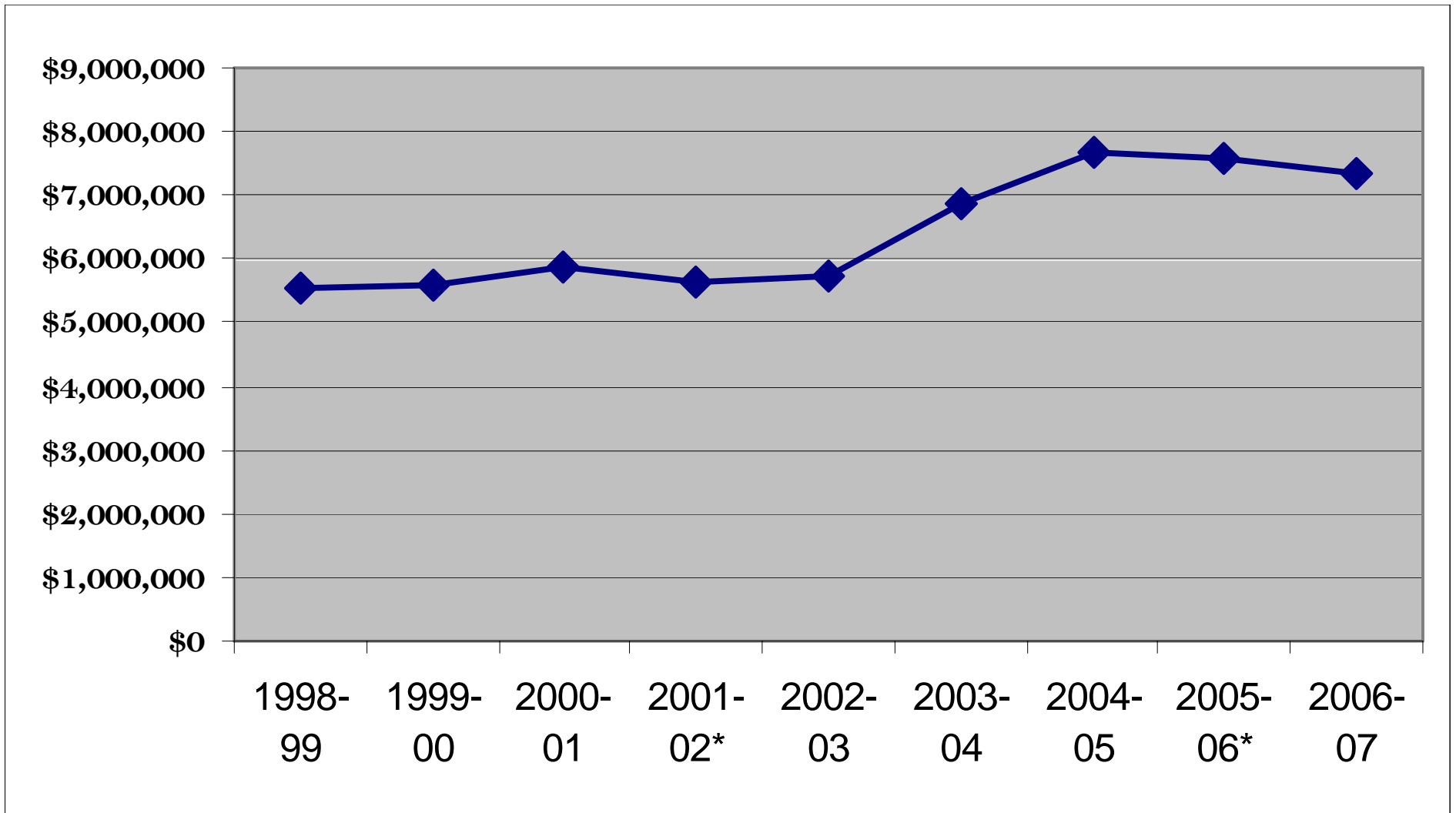
N

1 inch equals 3 miles

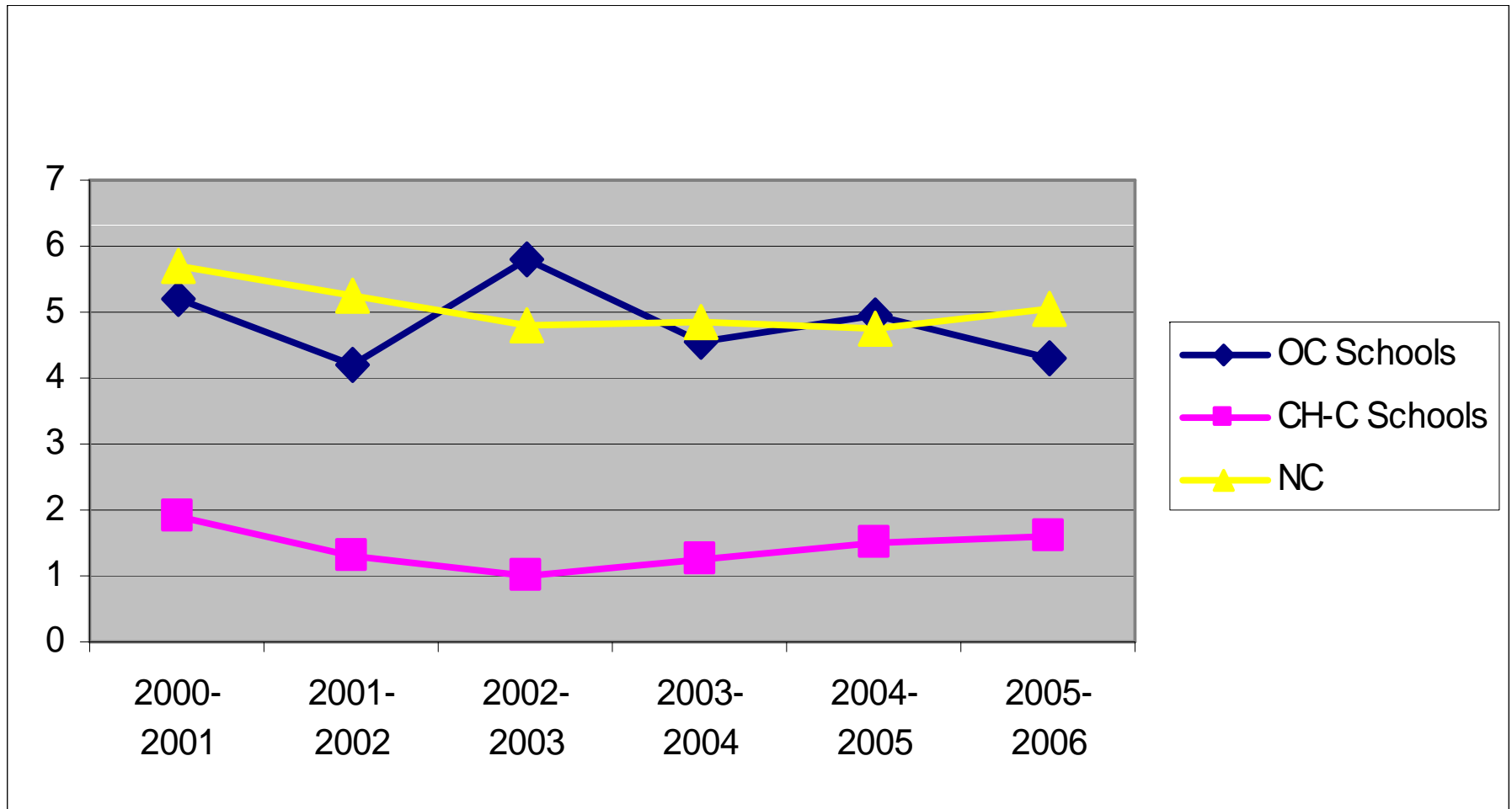
0 1 2 3 Miles

Orange County Planning and Inspection Department  
GIS Map Prepared by Brian Carson July 11, 2006

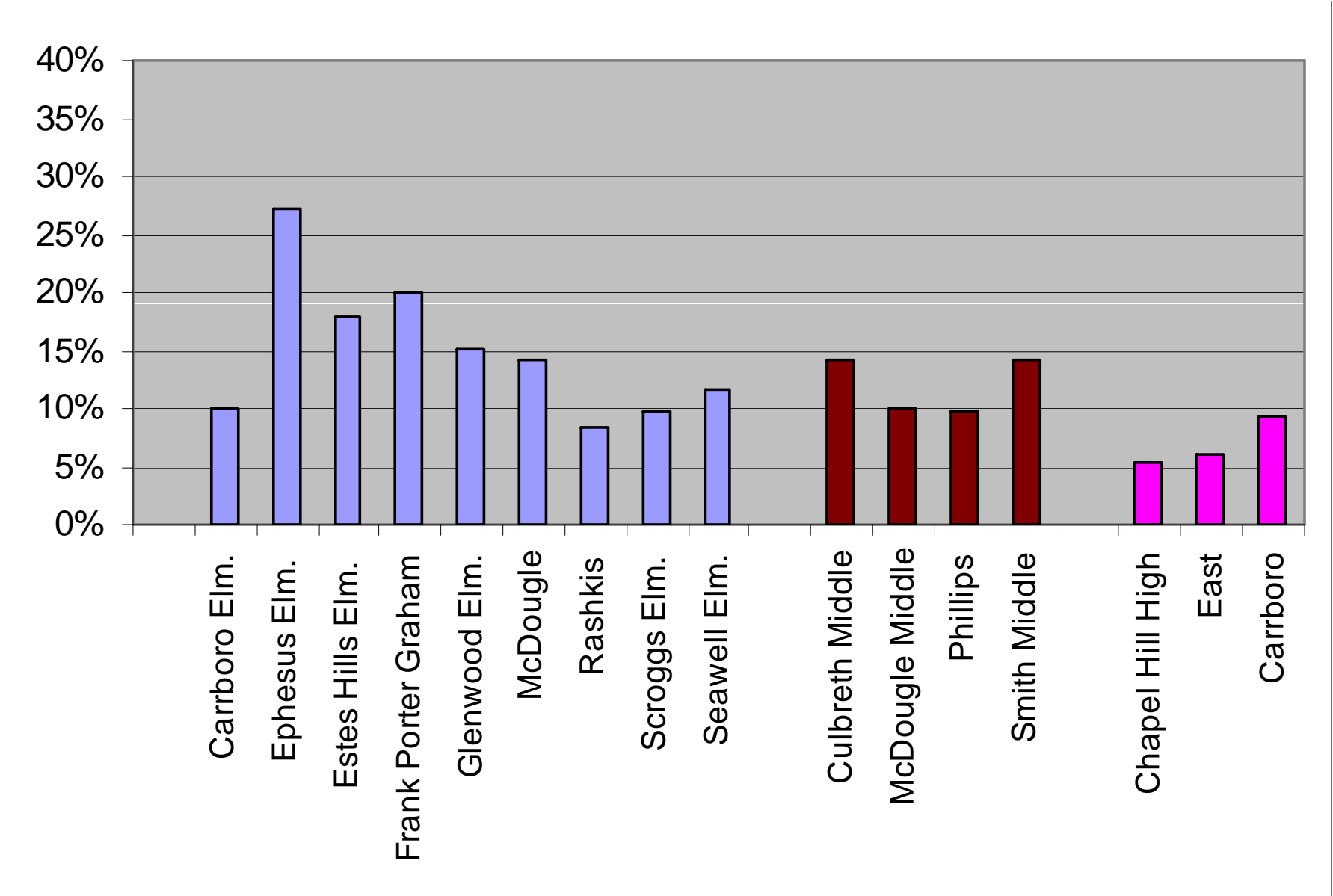
# Orange County Sales Tax (article 39) Collections



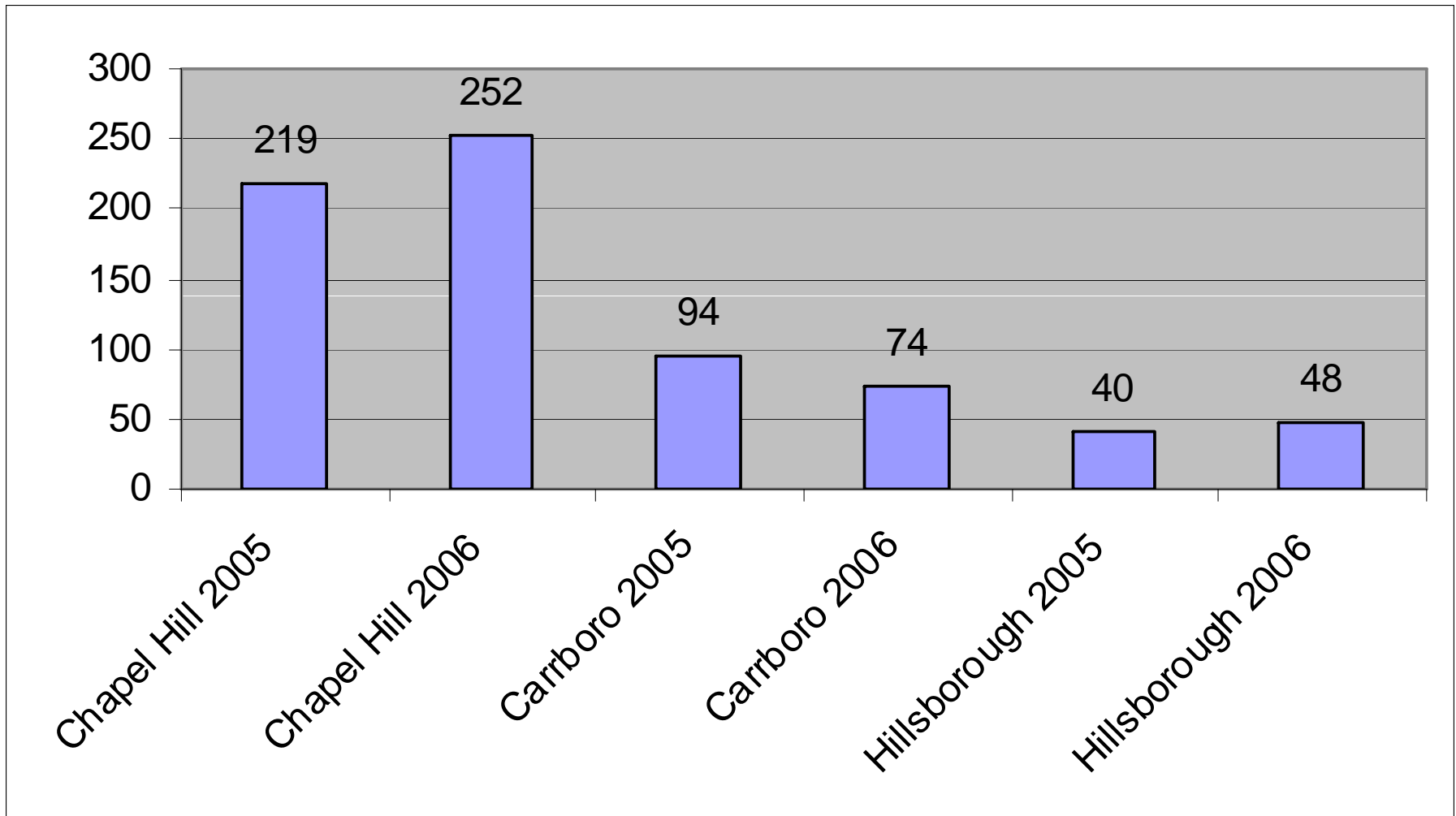
# Dropout Event Rate Grades 9-12



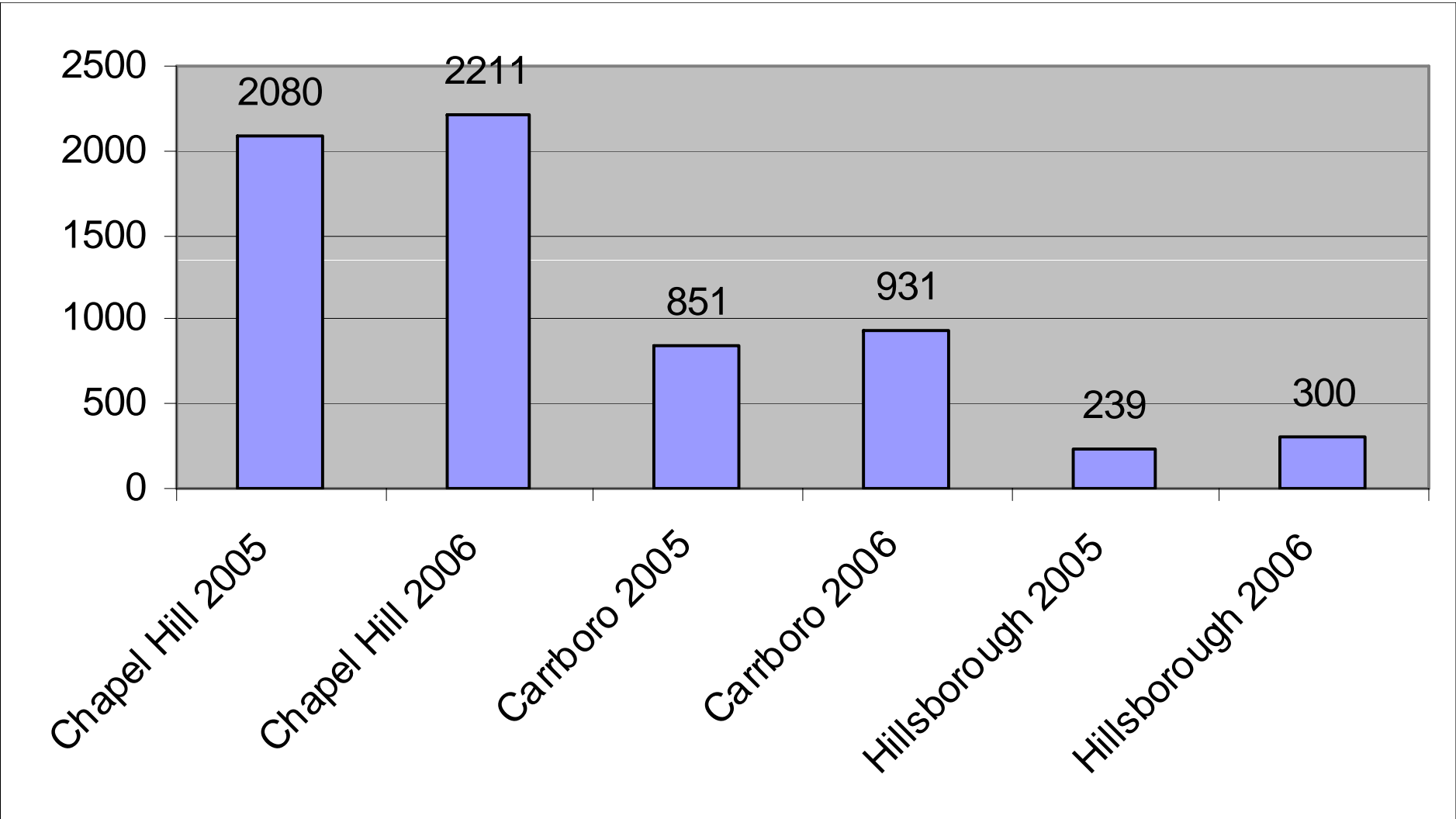
# Percent of Children Receiving Free/Reduced Lunch



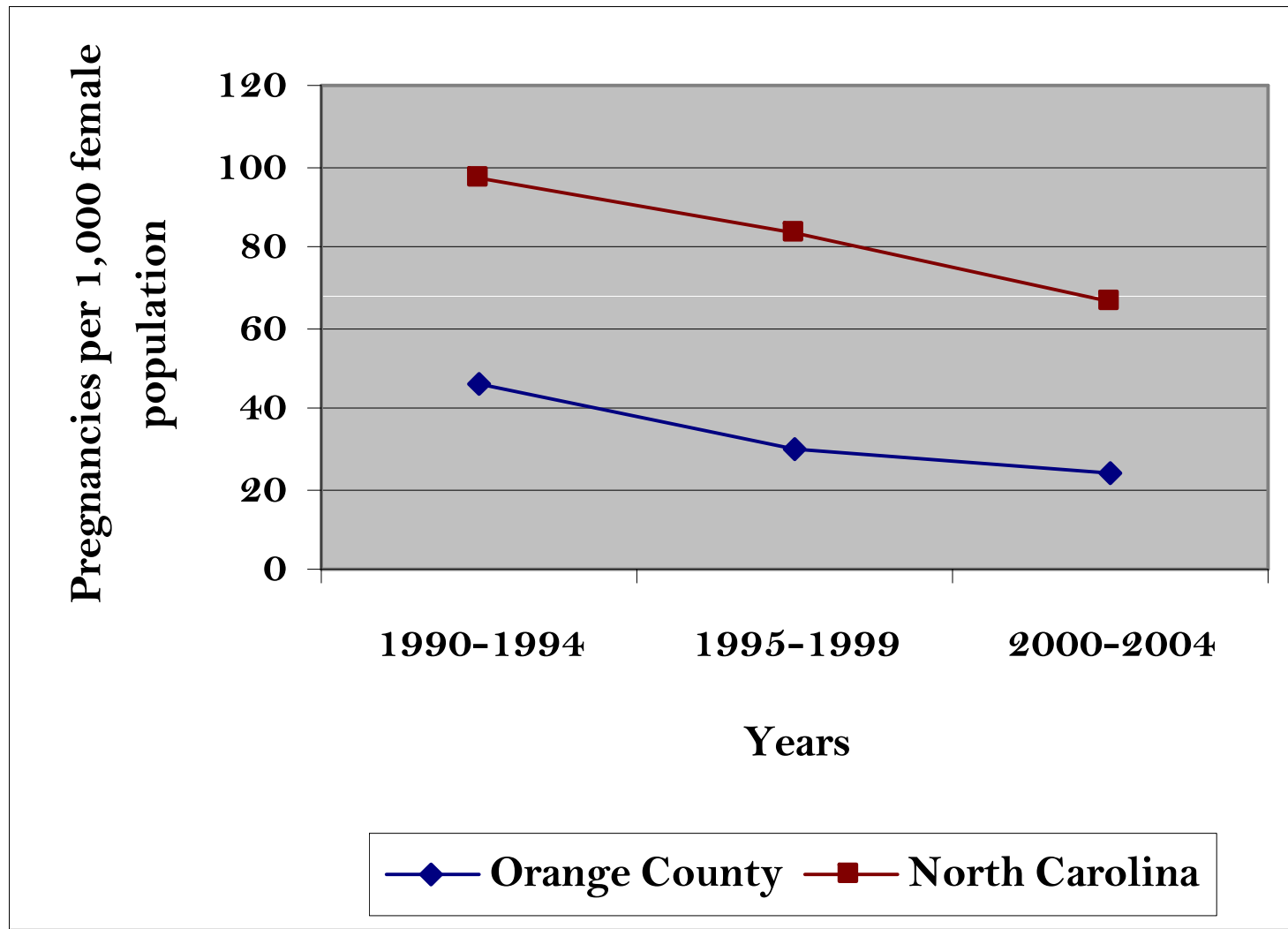
# Violent Crime Incidents



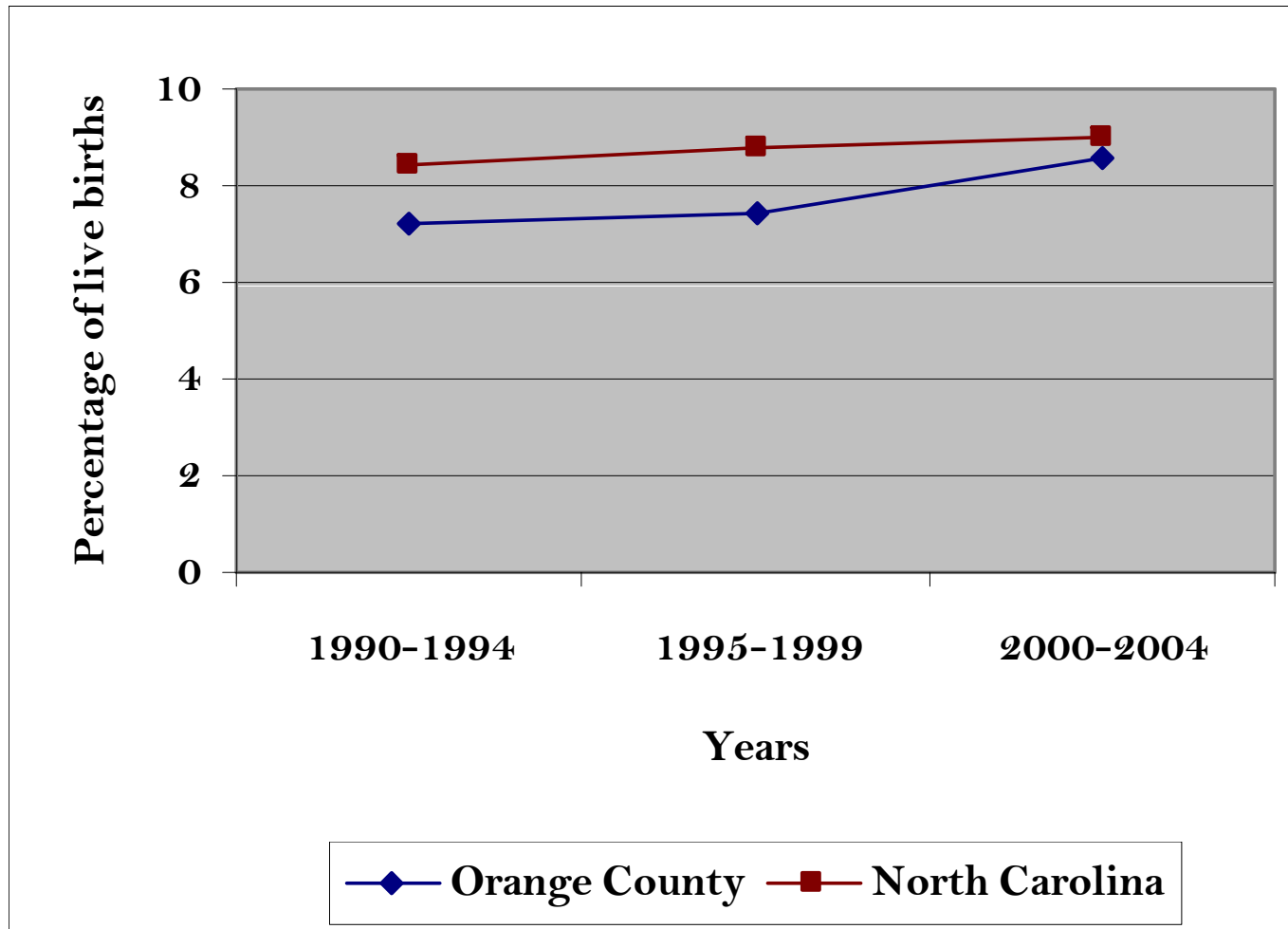
# Property Crime Incidents



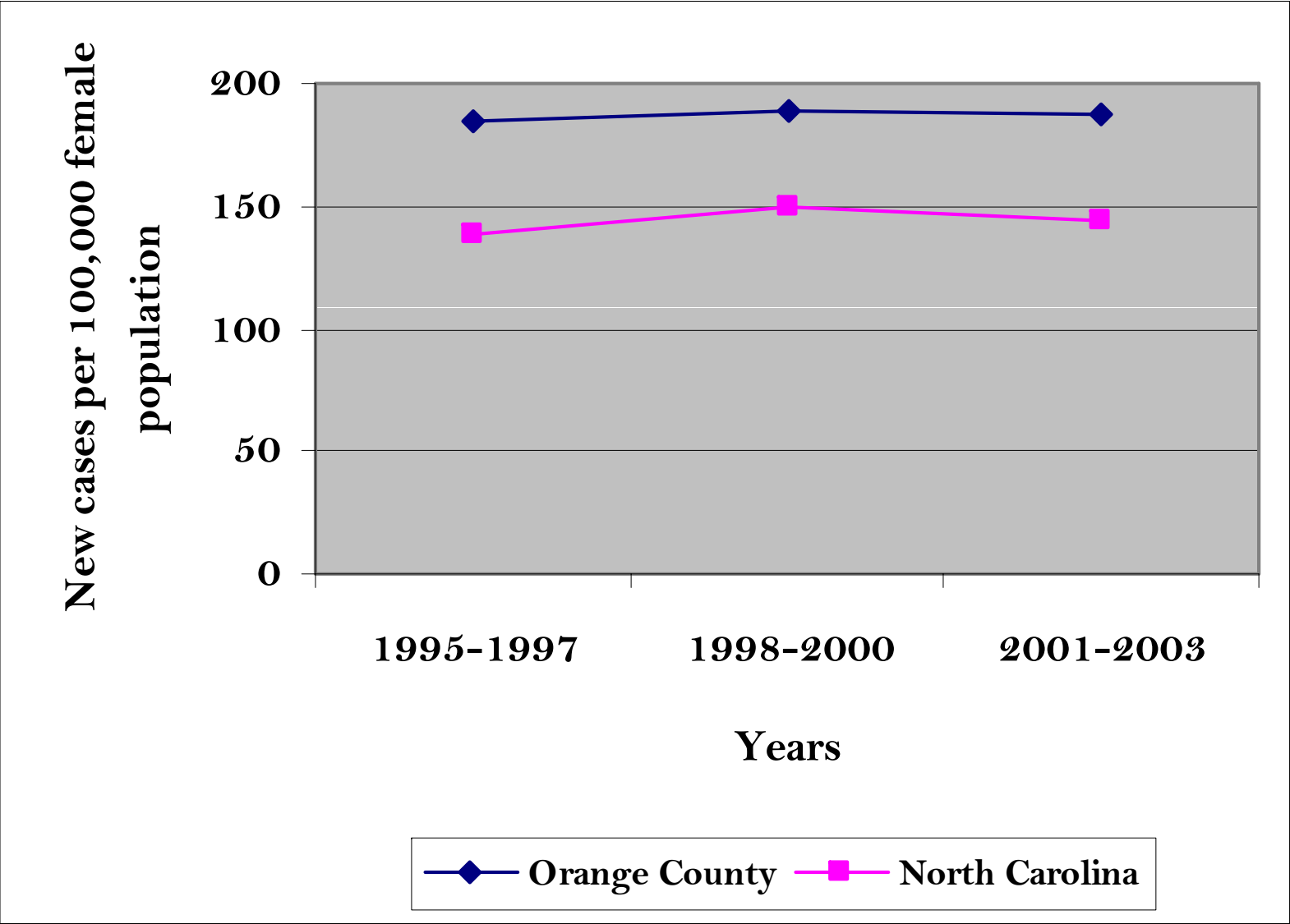
# Resident Teen Pregnancies (ages 15-19)



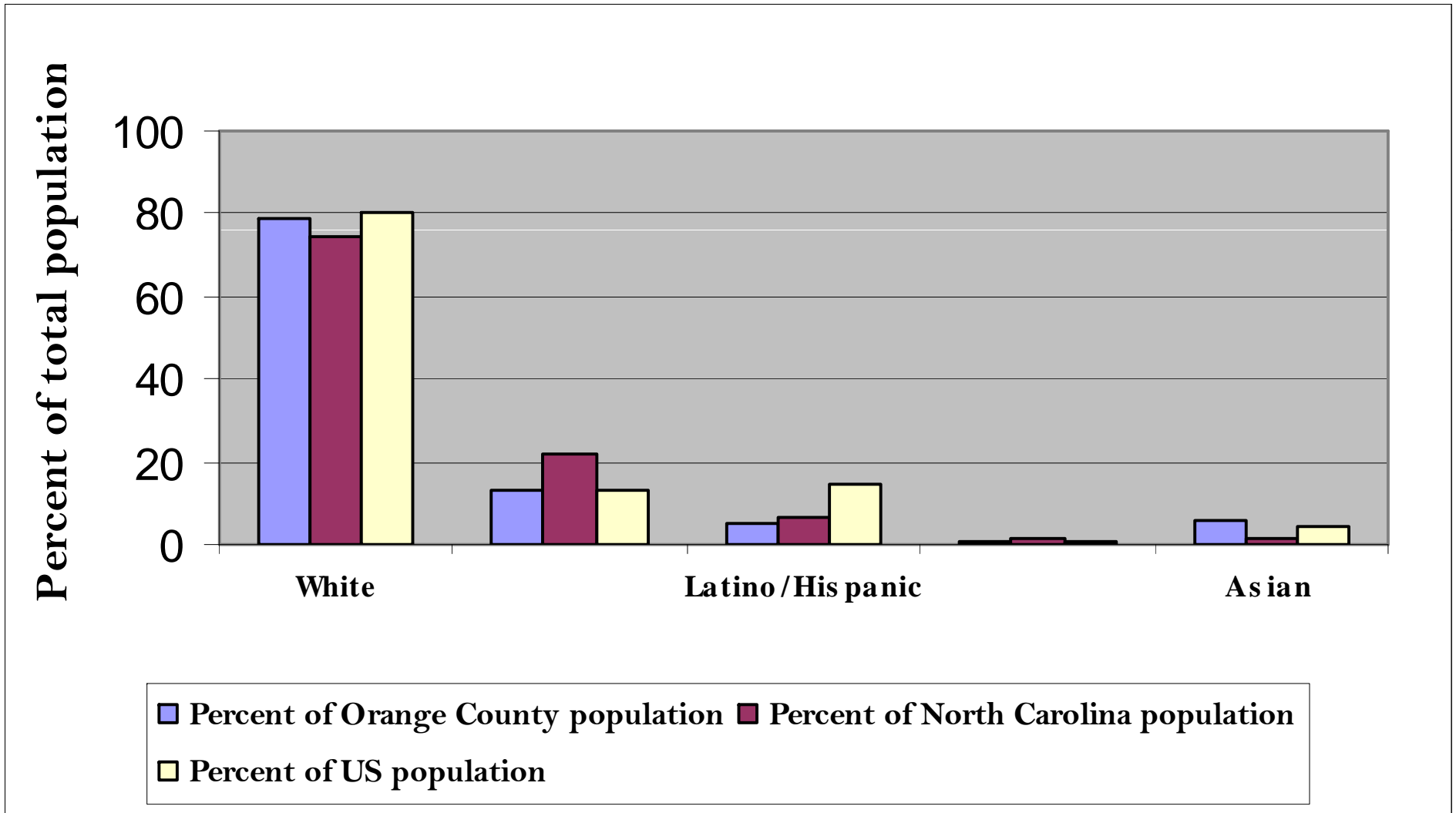
# Percentage of Resident Live Births Classified as Low Birthweight (5lbs 8ozs or less)



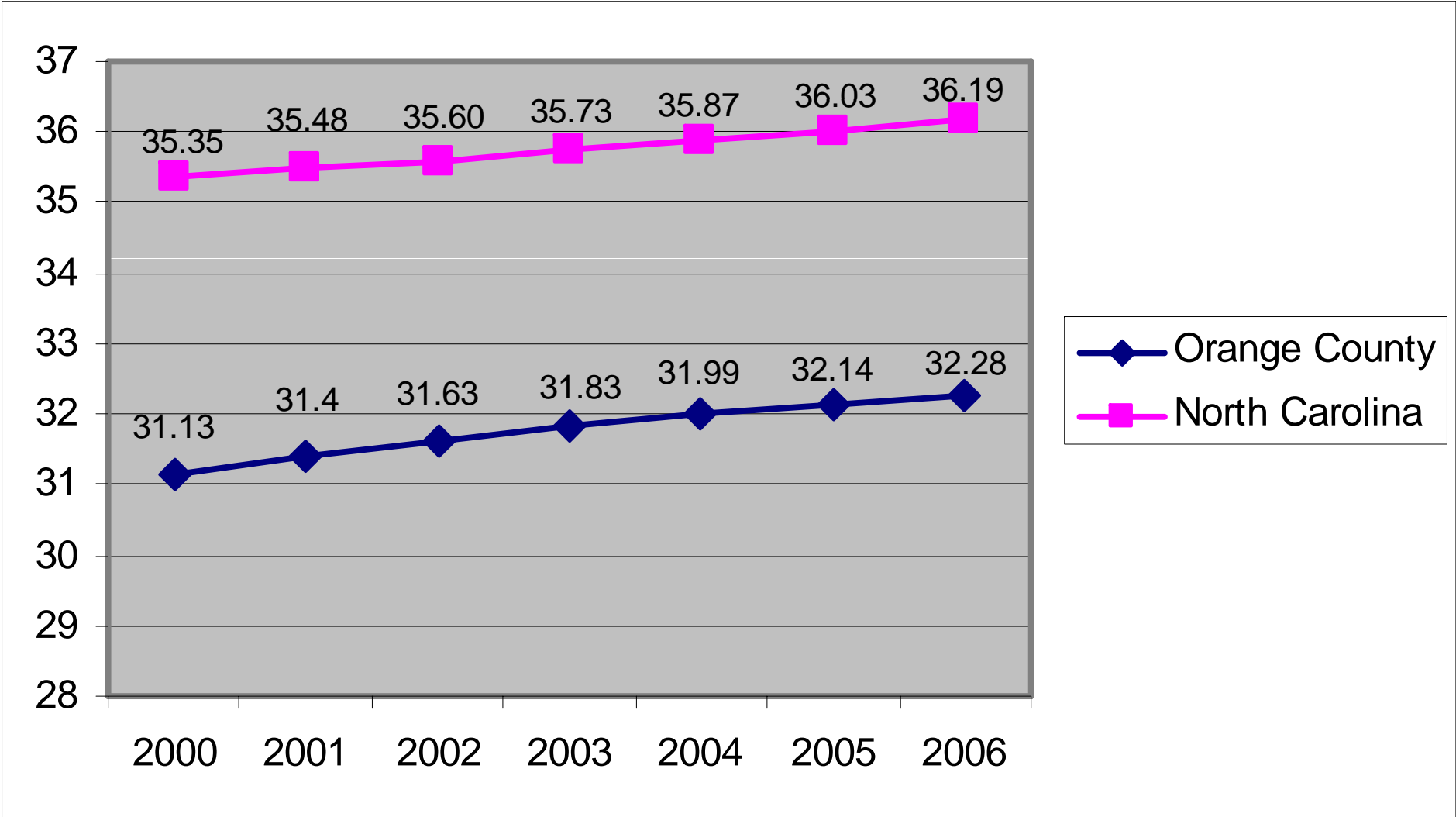
# Age-adjusted Breast Cancer Incident Rate



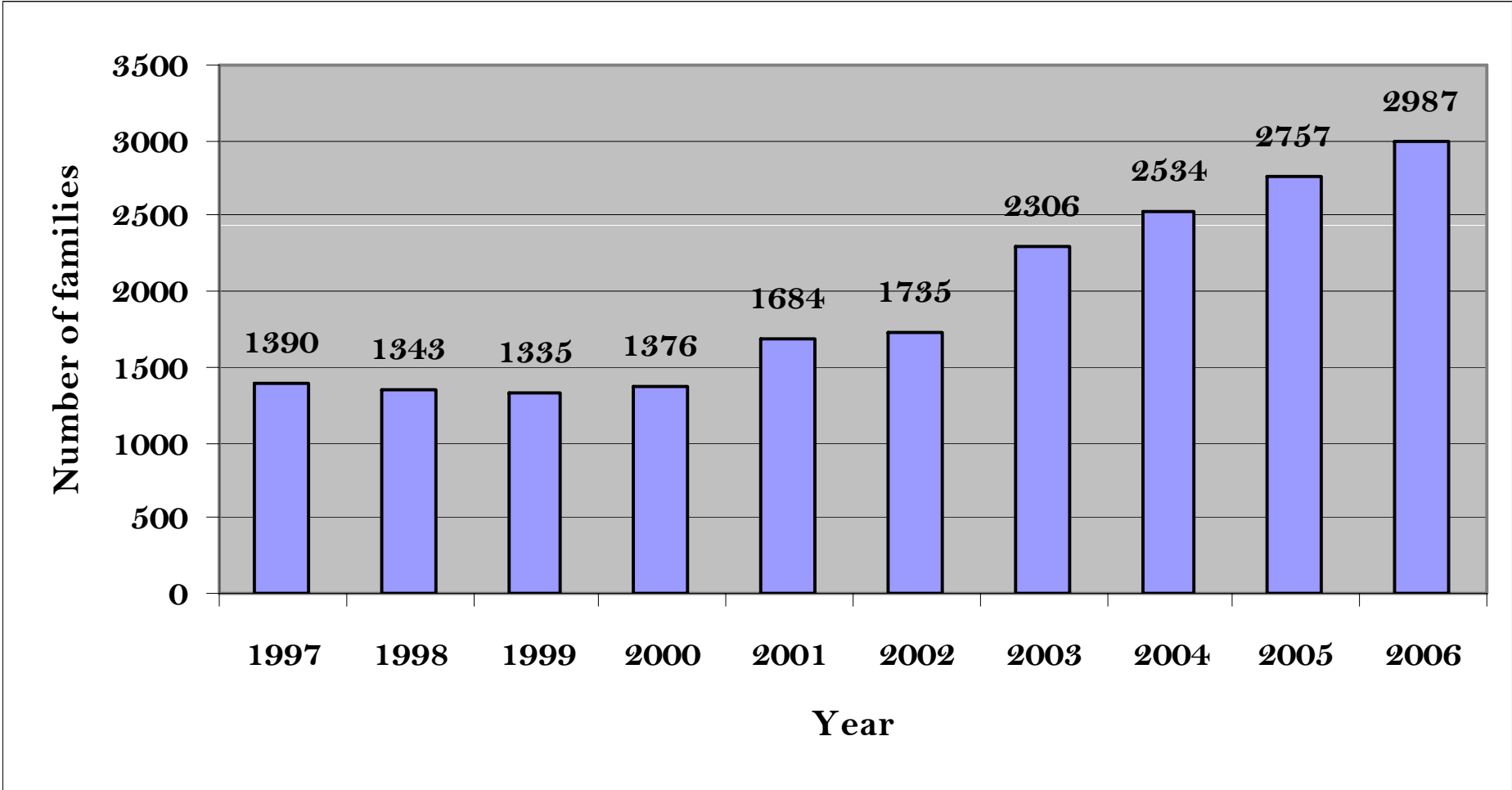
# Population by Race



# Median Age Over Time



# Food Stamp Recipients in Orange County



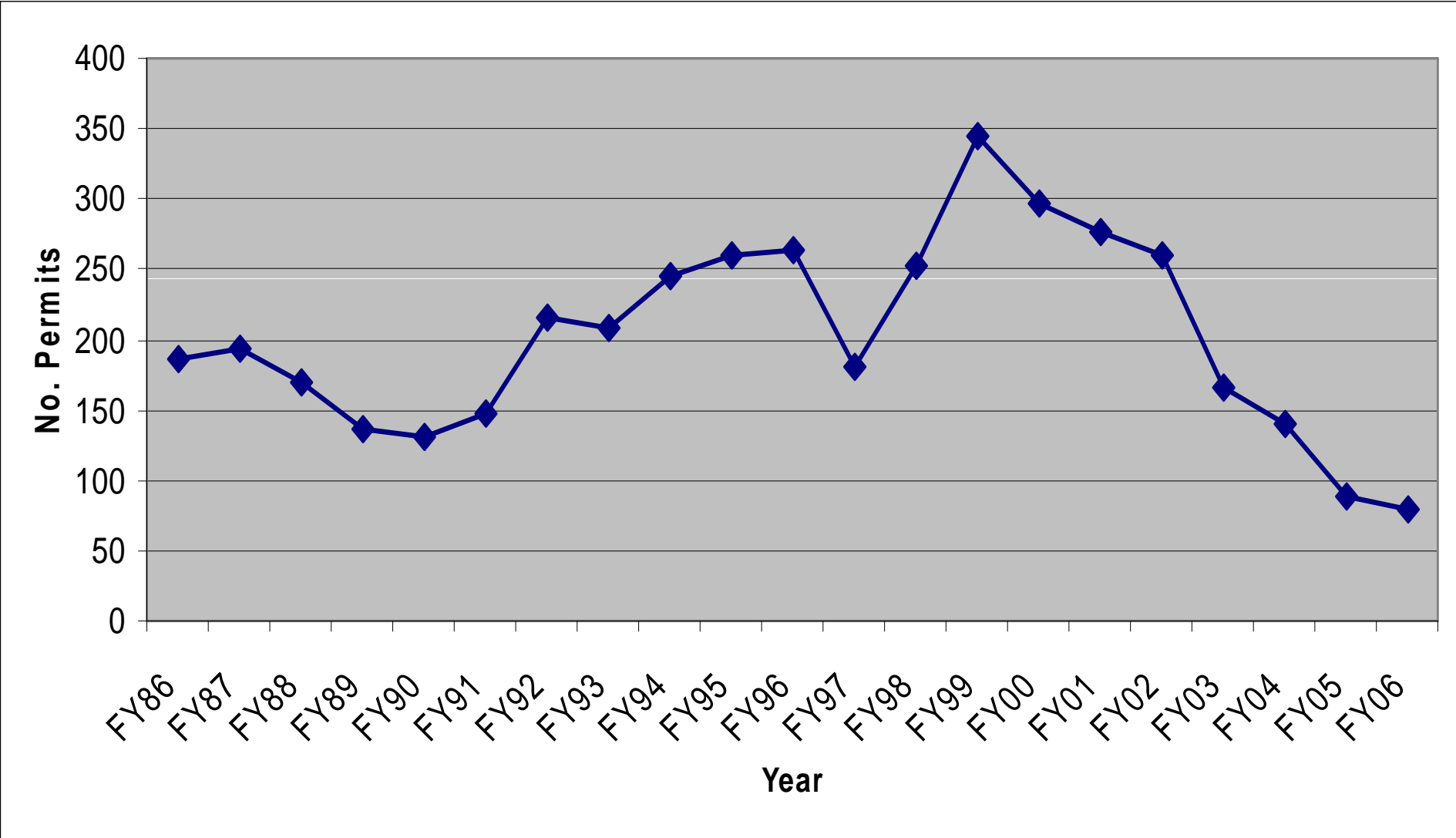
# Public Employers

University of North Carolina	11036
• UNC Hospital	6475
• CHC Schools	2618
• Orange County Schools	1253
• Orange County	740
• Town of Chapel Hill	692
• Other local government	300

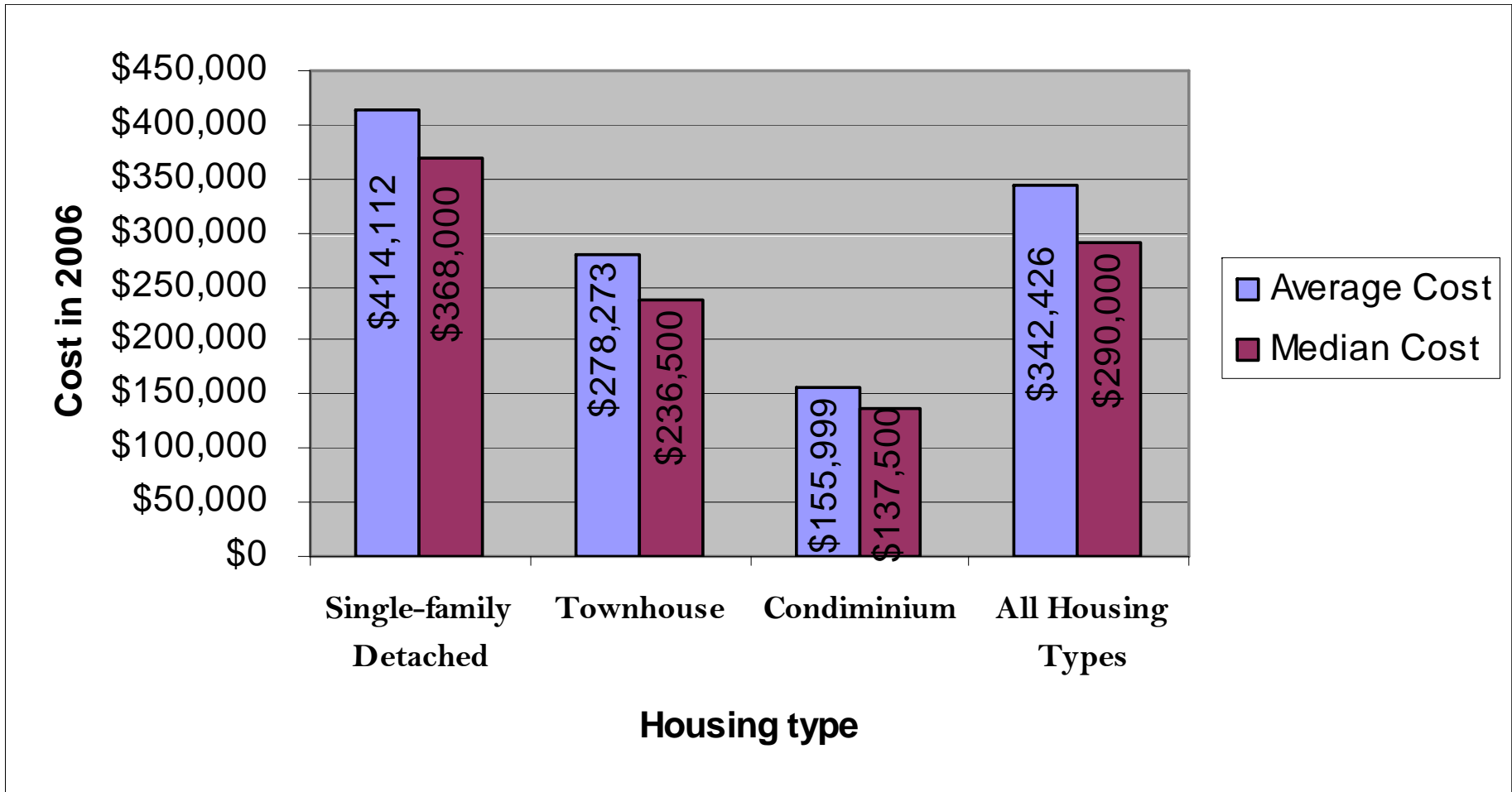
# Private Employers

- Blue Cross/Blue Shield of NC 1373
- General Electric Company, Inc. 525
- Harris Teeter, Inc. 522
- Sports Endeavors, Inc. 434
- Wal-Mart Stores, Inc. 426
- Aramark Services 380
- PHE, Inc. 369
- A Southern Season 341
- Magnolia Gardens 300

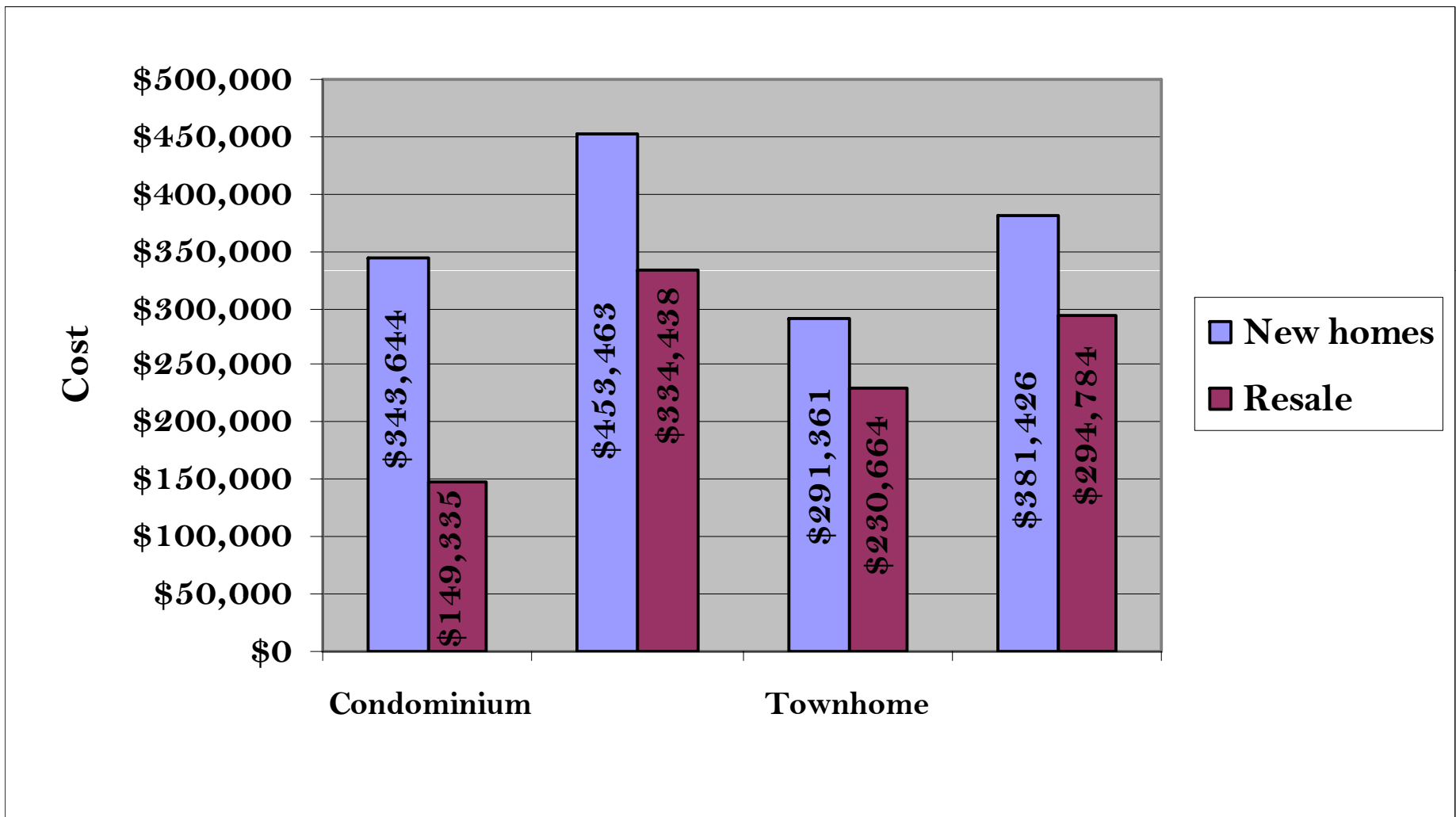
# Single-family Detached Housing Permits



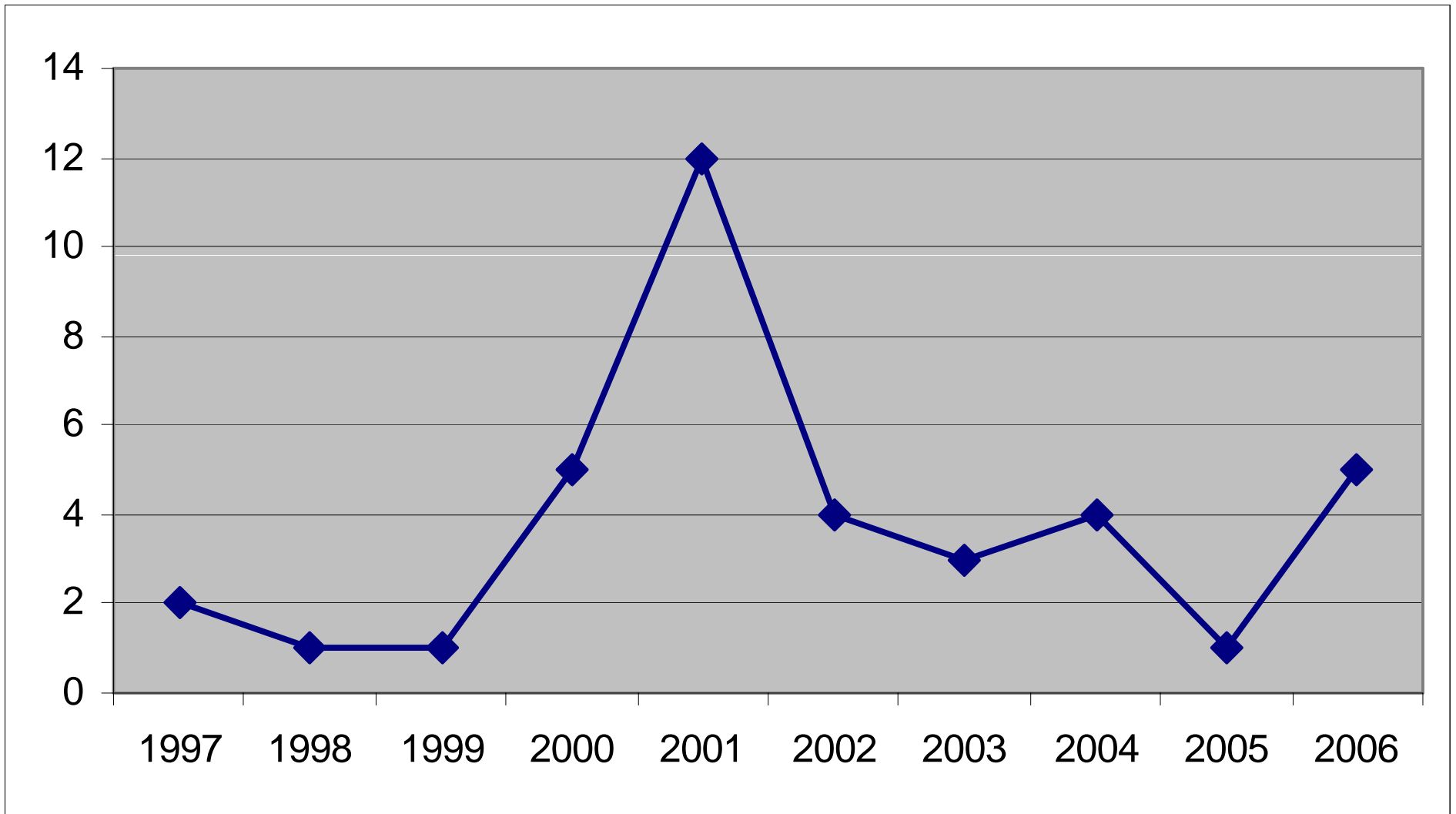
# Average, Median Sales Price by Type in Chapel Hill



# Average Housing Costs: 2006

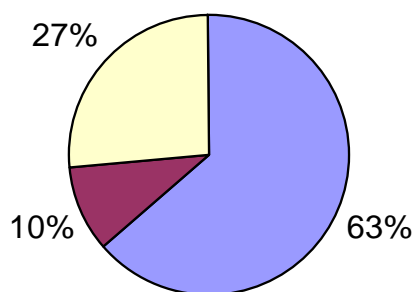


# UNC Chapel Hill Private Company Creation



# Triangle Area In-Migration Across Submarkets 2006

Triangle Area In-Migration



■ % From Within Market     
 ■ % From in State, Outside Market     
 ■ % From Out of State

Triangle Area Migration				
Subname	% From Within Market	% From in State, Outside Market	% From Out of State	Total
Angier / North Harnett	68%	15%	17%	149
Apex / Holly Springs	55%	6%	39%	506
Brier Creek	67%	17%	17%	6
Cary / Morrisville	55%	9%	35%	963
Central Durham	72%	7%	21%	436
Chapel Hill	54%	9%	37%	440
Clayton	55%	17%	29%	209
Cleveland	56%	15%	29%	175
Creedmoor / Butner	76%	10%	14%	105
Fuquay-Varina	66%	7%	27%	201
Garner / Southeast Wake	68%	8%	24%	323
Hillsborough	58%	18%	24%	165
Inside the Beltline	75%	8%	18%	443
Knightdale	74%	7%	19%	137
North Durham	64%	8%	28%	191
North Franklin	77%	5%	18%	137
North Raleigh	70%	10%	20%	1059
Northeast Durham	80%	8%	12%	181
Northeast Raleigh	66%	10%	24%	275
Orange County	63%	20%	17%	135
Oxford / North Granville	69%	8%	23%	109
Pittsboro / East Chatham	56%	7%	37%	192
Rolesville	63%	13%	24%	141
RTP / Durham County	65%	16%	19%	31
Siler City / West Chatham	57%	23%	20%	84
South Durham / South Pointe	60%	9%	31%	577
South Harnett	41%	29%	30%	270
Southeast Raleigh	83%	5%	11%	149
Southwest Raleigh	65%	14%	22%	153
Wake Forest / Falls Lake	57%	9%	34%	691
Wendell / Zebulon	72%	12%	16%	151
Youngsville / South Franklin	68%	15%	17%	95
<b>Total</b>	<b>63%</b>	<b>10%</b>	<b>27%</b>	<b>8879</b>

Source: American Lives Data: Jan 2006 - Nov 2006